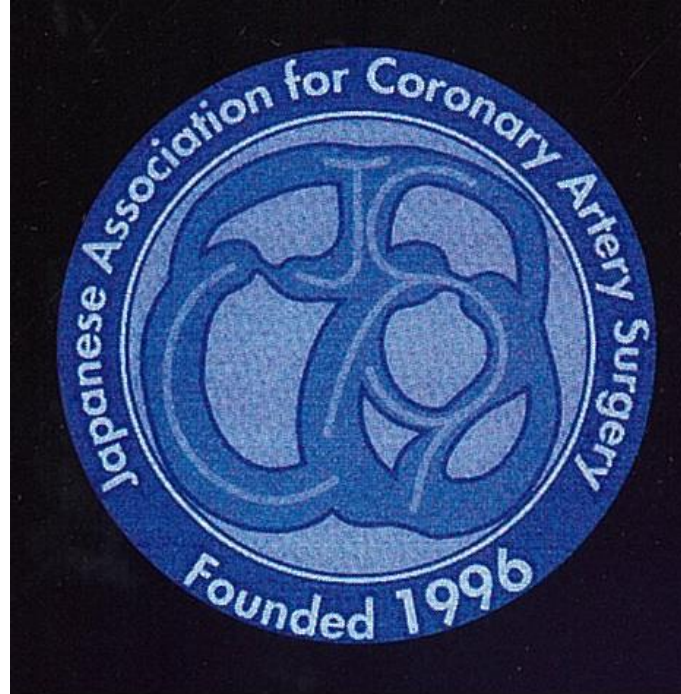


Coronary artery surgery results In 2020



**The Survey Committee of Japanese Association
for Coronary Artery Surgery (JACAS)**

Yearly number of CABG (by procedure- base)

		2020		2019
Yearly total number		17,975		19,594
Isolated CABG			Initial elective	Non-elective
		11,172 (62%)	7,585	3,587
	OPCAB		4,286 (57%)	1,739 (49%)
	ONCAB		3,299 (43%)	1,848 (51%)
Concomitant CABG		6,803 (38%)		7,038 (36%)

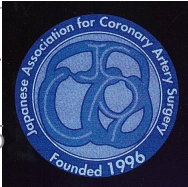
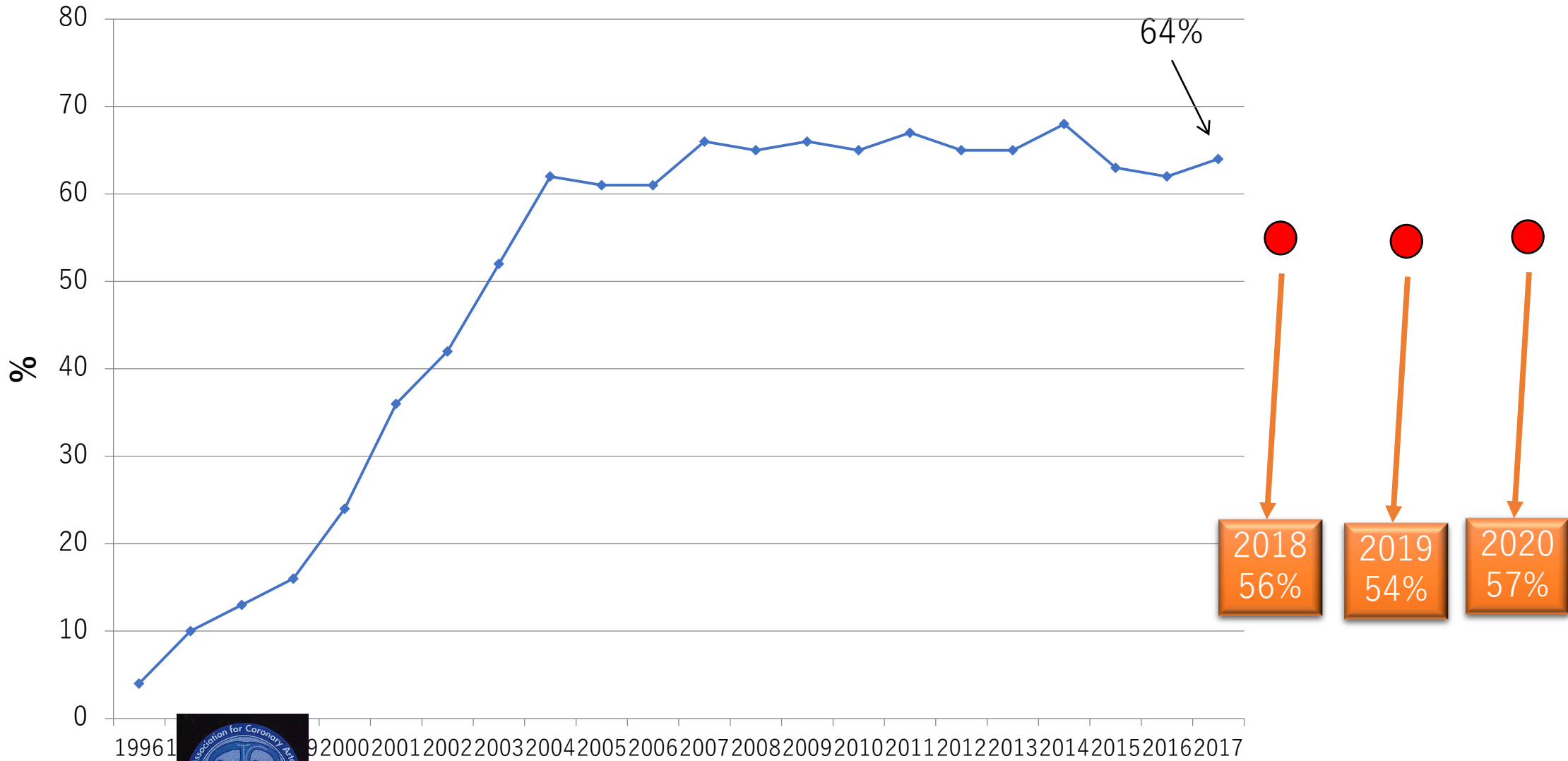


Yearly number of CABG (by procedure- base)

	2020 [前年比]			2019		
Yearly total number	17,975 [-8%]			19,594		
Isolated CABG		Initial elective	Non-elective		Initial elective	Non-elective
	11,172 (62%) [-11%]	7,585 [-25%]	3,587 [+50%]	12556 (64%)	10163	2393
OPCAB		4,286 (57%) [-21%]	1,739 (49%) [+61%]		5452 (54%)	1079 (45%)
ONCAB		3,299 (43%) [-30%]	1,848 (51%) [+41%]		4711 (44%)	1314 (55%)
Concomitant CABG	6,803 (38%) [-3%]			7038 (36%)		



Changes of off-pump CABG rate (Initial elective CABG)



2021/7/15

冠動脈外科学会学術委員会 2021年ホームページ用
(2020年データ分)



Gender distribution

	Female	Male	Total
< 50	78	459	537
50 – 59	146	1,196	1,342
60 – 69	450	2,570	3,020
70 – 79	1,028	3,662	4,690
80 =<	498	1,085	1,583
Total	2,200	8,972	11,172



2021/7/15

冠動脈外科学会学術委員会 2021年ホームページ用 (2020年データ分)



Mortality- isolated CABG cases 2020

	N	30-day mortality		Operative mortality	
Isolated cases	11,172	198	1.8%	308	2.8%
Isolated, Initial, Elective	7,585	51	0.7%	86	1.1%
Off-pump Intended					
Completed	4,191	11	0.3%	24	0.6%
Converted	95	5	5.3%	7	7.4%
On-pump Intended					
Arrest	1,496	12	0.8%	22	1.5%
Non-arrest, Vf	1,185	20	1.7%	28	2.4%
No information	618	4	0.6%	5	0.8%



Mortality- isolated CABG cases 2020

	N	30-day mortality		Operative mortality	
Isolated cases	11,172	198	1.8%	308	2.8%
Isolated, Initial, Elective	7,585	51	0.7%	86	1.1%
Off-pump Intended					
Completed	4,191	11	0.3%	24	0.6%
Converted	95	5	5.3%	7	7.4%
On-pump Intended					
Arrest	1,496	12	0.8%	22	1.5%
Non-arrest, Vf	1,185	20	1.7%	28	2.4%
No information	618	4	0.6%	5	0.8%



Mortality- isolated CABG cases 2020 [2019]

	N	30-day mortality		Operative mortality	
Isolated cases	11,172	198	1.8% [1.7]	308	2.8% [2.8]
Isolated, Initial, Elective	7,585	51	0.7% [0.9]	86	1.1% [1.5]
Off-pump Intended					
Completed	4,191	11	0.3% [0.6]	24	0.6% [1.0]
Converted	95	5	5.3% [5.1]	7	7.4% [8.8]
On-pump Intended					
Arrest	1,496	12	0.8% [1.1]	22	1.5% [1.6]
Non-arrest, Vf	1,185	20	1.7% [1.4]	28	2.4% [2.2]
No information	618	4	0.6% [0.5]	5	0.8% [1.4]



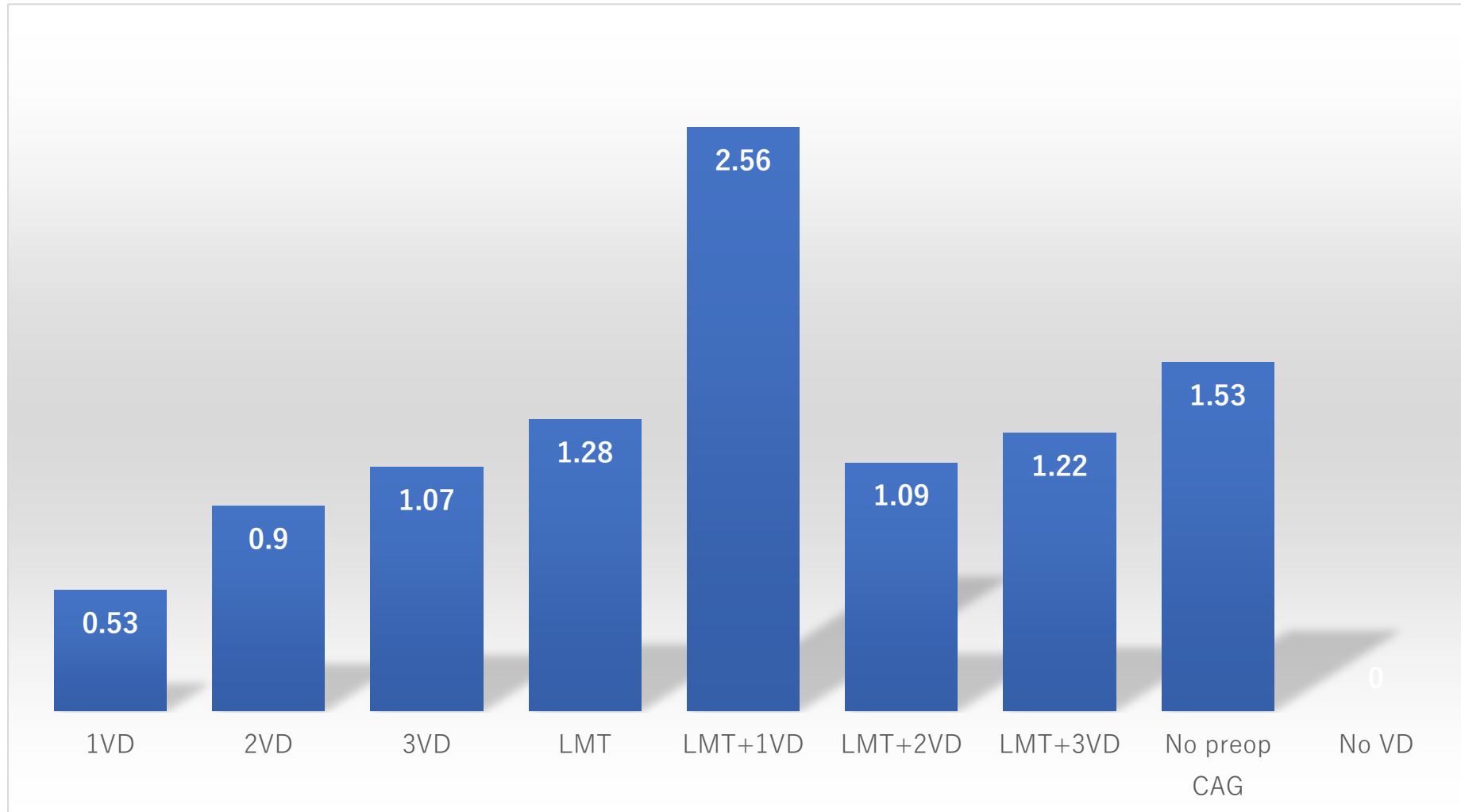
Mortality- isolated CABG cases 2020 [2019]

	N	30-day mortality		Operative mortality	
Isolated cases	11,172	198	1.8% [1.7]	308	2.8% [2.8]
Isolated, Initial, Elective	7,585	51	0.7% [0.9]	86	1.1% [1.5]
Off-pump Intended					
Completed	4,191	11	0.3% [0.6]	24	0.6% [1.0]
Converted	95	5	5.3% [5.1]	7	7.4% [8.8]
On-pump Intended					
Arrest	1,496	12	0.8% [1.1]	22	1.5% [1.6]
Non-arrest, Vf	1,185	20	1.7% [1.4]	28	2.4% [2.2]
No information	618	4	0.6% [0.5]	5	0.8% [1.4]

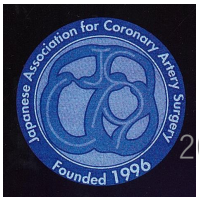
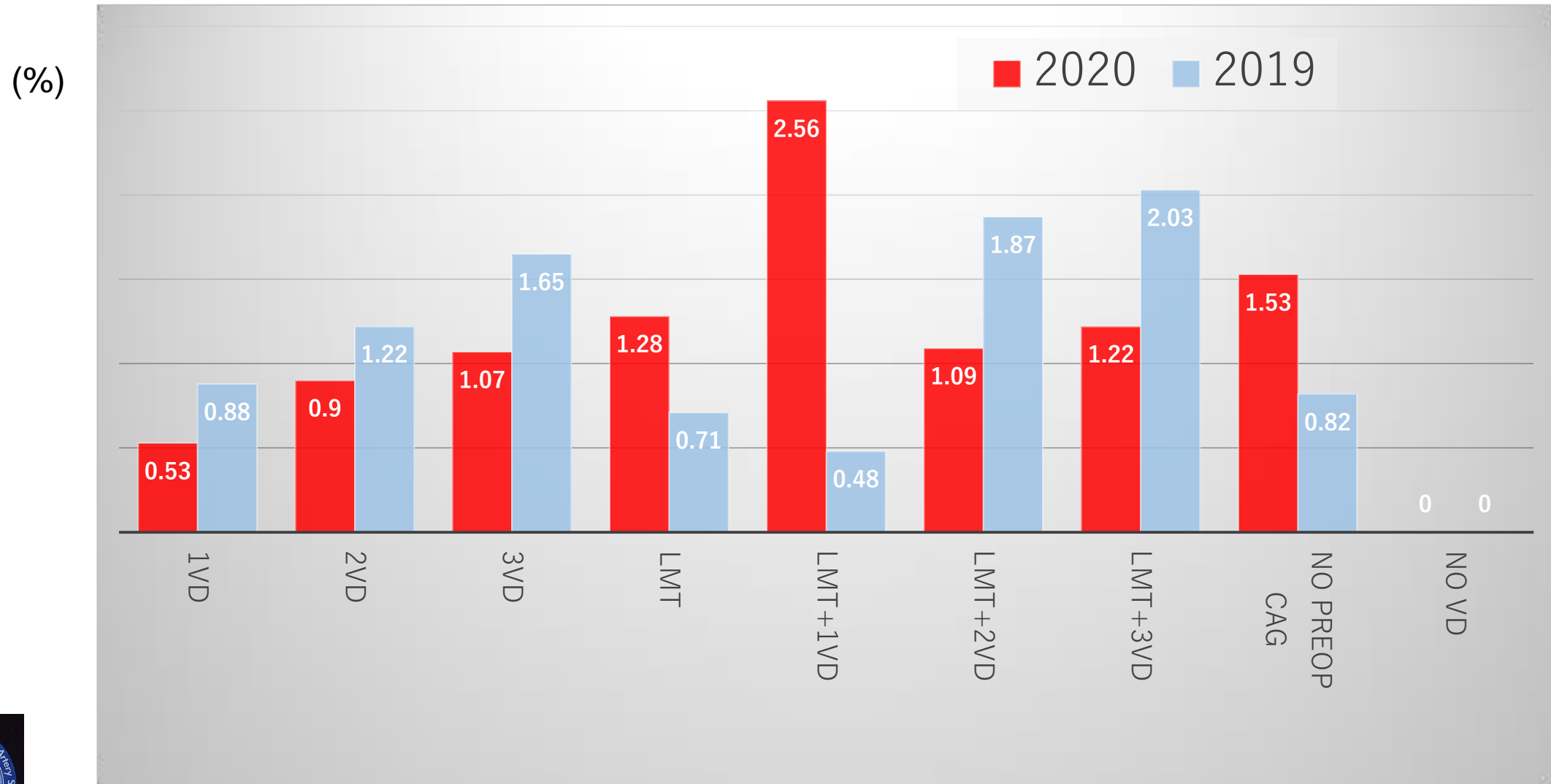


Mortality by extent of CAD(%) 2020

(%)



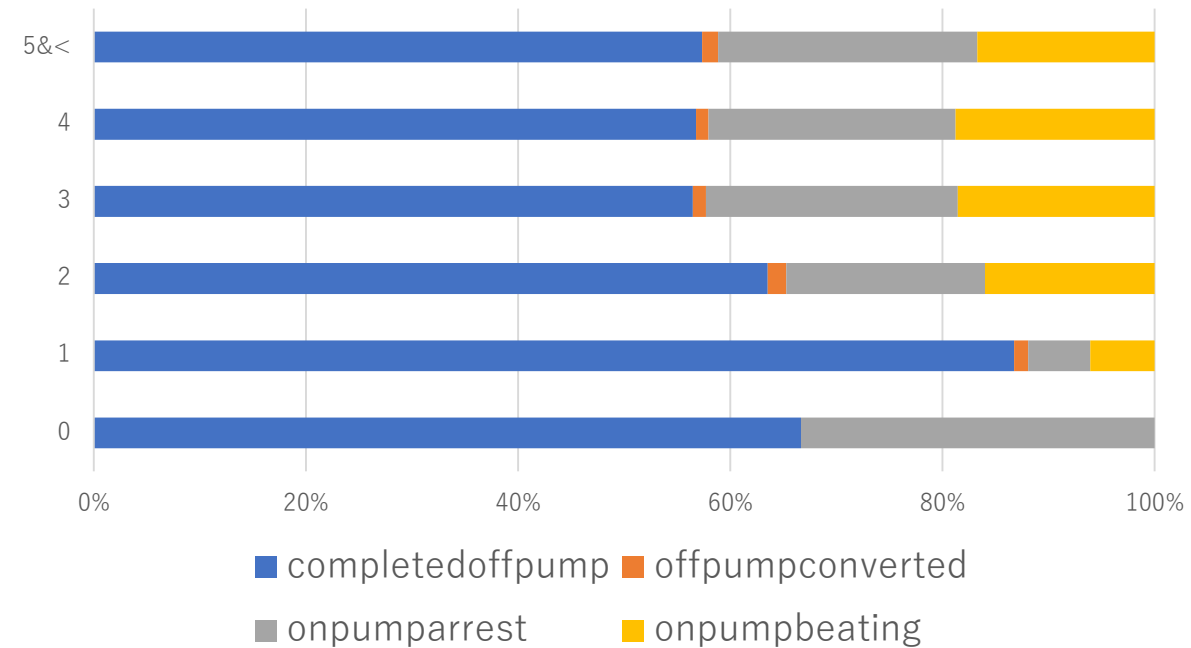
Mortality by extent of CAD(%) 2020, 2019



Number of anastomosis according to procedure (initial elective CABG)

詳細不明症例を除外

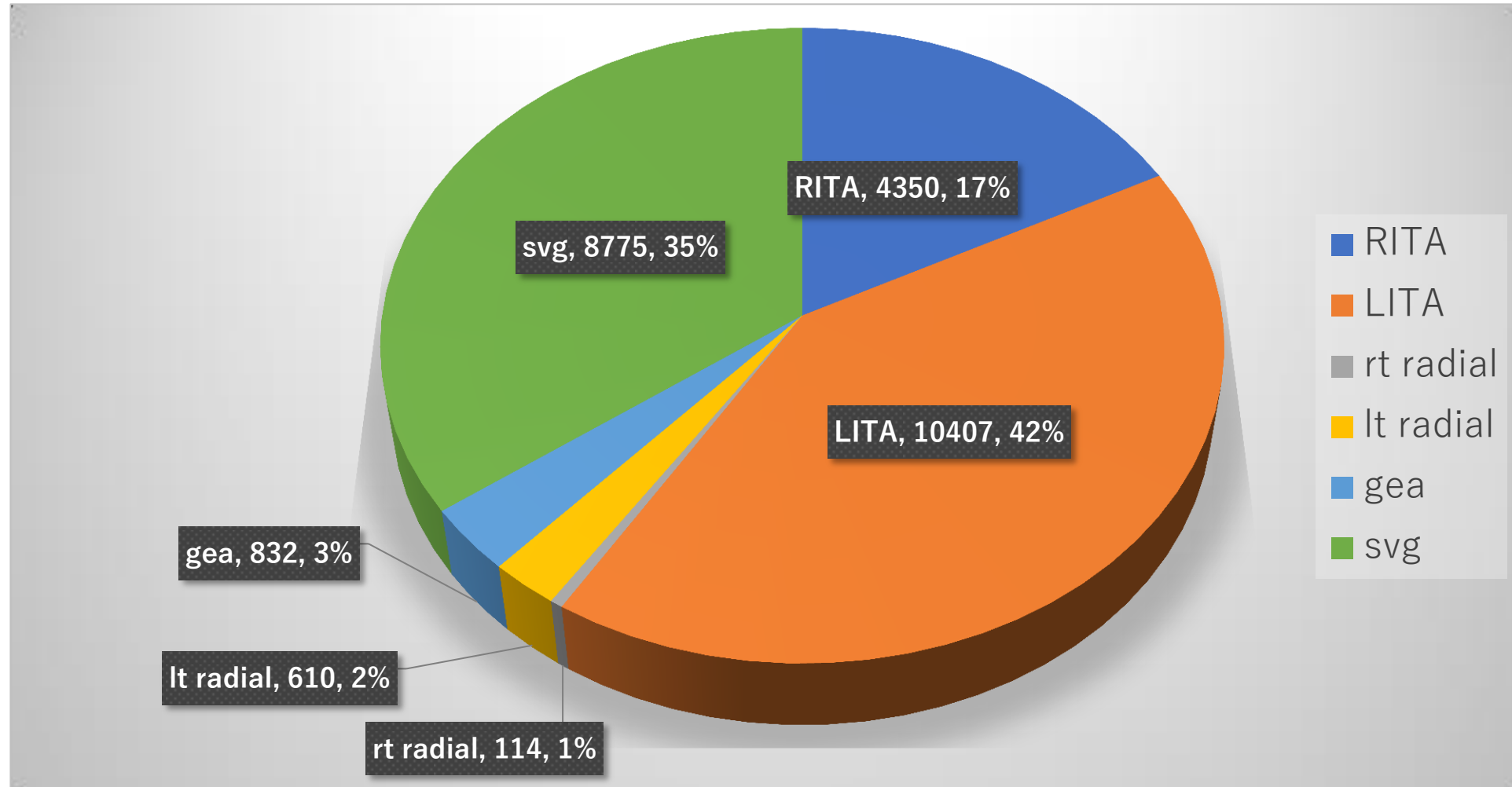
anastomosis	off-pump completed	off-pump converted	on-pump arrest	on-pump beating
0	2	0	1	0
1	400	6	27	28
2	946	26	279	238
3	1471	32	619	483
4	919	19	377	304
5=<	453	12	193	132



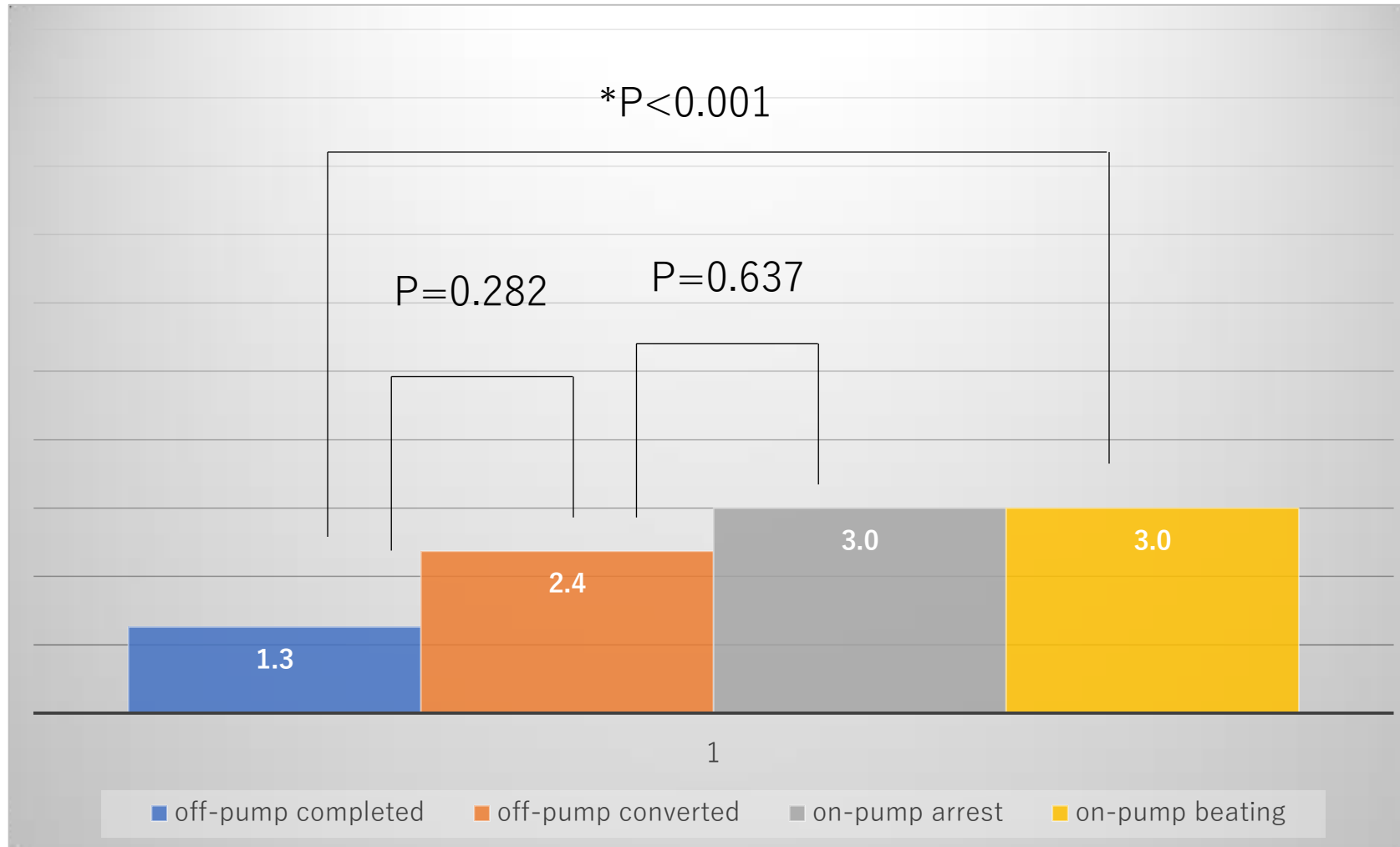
平均吻合数2020 [2019] : 3.1 [3.1]



Graft selection 2020



Stroke rate according to procedures



LV failure due to AMI 2020

	N	30-day mortality	Operative mortality
Papillary muscle rupture	58	10 (17.2%)	16 (27.6%)
LV free wall rupture	270		
Blow-out type	94	51 (54.3%)	58 (61.7%)
Oozing type	176	22 (12.5%)	31 (17.6%)
LV aneurysm	17	0 (0.0%)	0 (0.0%)



Procedures to ischemic MR 2020

	N	30-day mortality	Operative mortality
Ischemic MR	383	30 (7.8%)	49 (12.8%)
Mitral valve plasty	228	14 (6.1%)	25 (11.0%)
+LV procedure	25	2 (8.0%)	3 (12.0%)
Mitral valve replacement	155	16 (10.3%)	24 (15.5%)
+LV procedure	1	0 (0%)	0 (0%)

